

MoneyTree Cash Systems (MTCS) Enclosure Installation Process

Installation of your new MTCS ATM Enclosure is straightforward and can be accomplished in two hours or less, provided the power and phone service is stubbed-out at the pad.

Basic installation – When the enclosure arrives it will be bolted to the pallet, unbolt from pallet. The enclosure can be easily placed on the concrete pad with a forklift or pallet jack. Maneuver the pallet jack close to the curb, leave the enclosure protruding past the pallet jack forks, raise the enclosure to a height above the curb, place a couple of 1” pipes under the enclosure and lower the pallet jack slightly, push the enclosure into place. Once in place use a pry bar to remove the 1” pipes from under the enclosure.

Once the unit is in place open the doors and drill the anchor holes with a rotary impact drill and 5/8” bit. Place a 5/8” concrete expansion bolt into each of the holes and tap the bolt down with a hammer. If you have not used anchor bolts before, it is important to screw the nut on before taping the bolt down into the concrete. Otherwise a misplaced blow with the hammer could damage the threads and make the anchor bolt un-useable. (*Care must be taken to insure the enclosure is level, the tight tolerances on the door locking bars will not allow the doors to close if the enclosure is not level*), Tighten the bolts, about two turns past contact with the base of the enclosure. Run a bead of caulk around the outside perimeter of the enclosure.

Connecting the electric supply circuit – *Have your electrical contractor make the final connections to the enclosure.* The MTCS 2000 enclosure is equipped with dual 20amp breakers, which requires a single 40amp supply service from the installation site. All other MTCS enclosure models are equipped with dual duplex outlets; requiring 2–20amp service circuits supplied from the installation site. Flip the Aux breaker to the on position; this will allow you to test the A/C unit, light on the front of the unit and heater, if supplied.

Air conditioner thermostat setting – set the thermostat to the *highest* setting, this setting will maintain a temperature of 79 degrees or less, any lower and you are spending money you don’t need to be spending.

Heater thermostat setting – set the thermostat to 1-50 degrees, the thermostat has a range of 40-85 degrees, 50 degrees is recommended to avoid any conflict with the air conditioner setting.

Flip the ATM breaker to the on position – plug the ATM into the outlet marked “ATM”, connect the phone line, power up the ATM and program as needed.

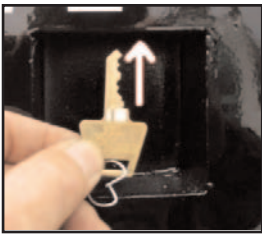
MTCS assumes no liability for the use of these installation documents, it is assumed that the installer has sufficient knowledge of electricity and construction experience to perform this task. **If you do not**, consult a professional service provider for the installation.

MoneyTree Cash Systems (MTCS) Enclosure Installation Process *continued*

Lock Assemblies – Your new MTCS ATM enclosure is equipped with high security recessed locks, which are protected with non-drillable hard plate, safe guard your keys. If you misplace your keys, the locksmith will not be able to drill the cylinders or pick the lock, cutting the hinges will not remove the doors...don't misplace your keys, if you do, please contact MTCS for assistance.

Unlocking the Enclosure

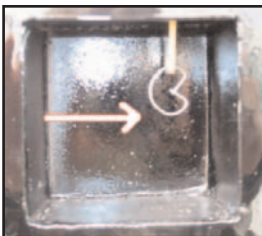
1. Hold key as shown below.



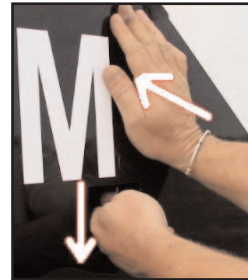
2. Insert the key up into the recessed lock cylinder.



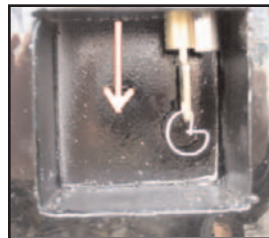
3. Rotate key to the right 90 degrees.



4. Pull down on the key (fig. 4.)



5. Once the key and cylinder drops down, rotate the key to the left 90 degrees and pull the key out. Lock enclosure in reverse order, making sure the cylinder goes all the way up into the lock assembly; *lock cylinder will be slightly recessed into the housing when seated correctly.*



MTCS assumes no liability for the use of these installation documents, it is assumed that the installer has sufficient knowledge of electricity and construction experience to perform this task. **If you do not**, consult a professional service provider for the installation.